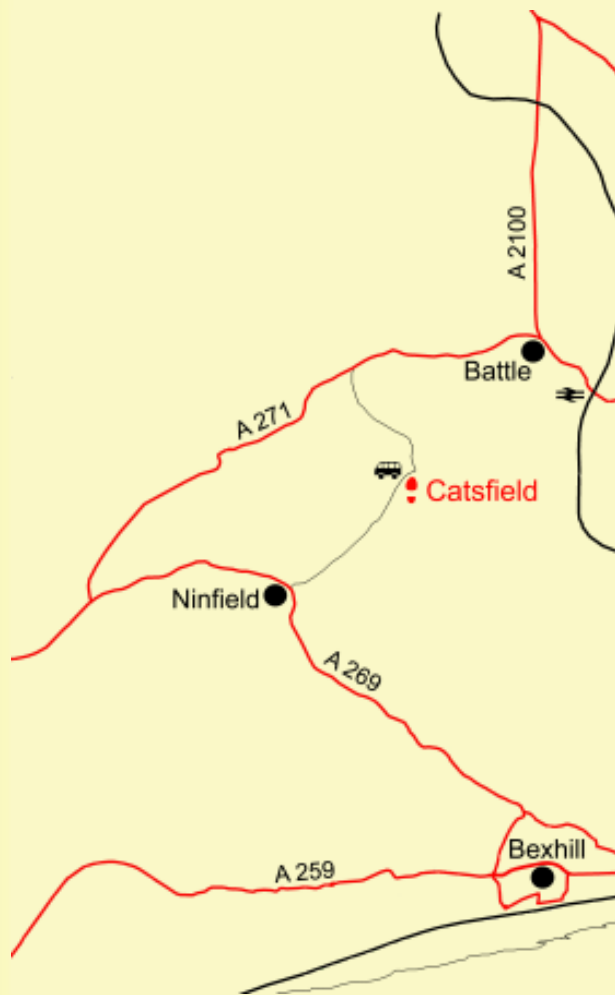





Location Map



Location Symbols

-  Bus stop/Request stop
-  Nearest Railway Station
-  Walk Location

Essential Information

Distance:
4 miles/6.5 kms

Walk grade:



Typical country walk with some hills and stiles, paths can be muddy (depending upon weather)

Maps:
OS Explorer 124
OS Landranger 199

Start/Finish:
The White Hart TQ 723137

Public Transport:
Buses: A bus service operates Monday to Friday between Battle and Eastbourne with a stop in Catsfield.
Trains: Battle Station (approx. 2.5 miles from Catsfield) is on the London to Hastings line and has a regular service.

Parking:
Parking is available in Catsfield



Catsfield Walk



Paths to Prosperity

East Sussex is a welcome haven for walkers in the busy south-east of England, with over two thirds of the County covered by the High Weald and Sussex Downs Areas of Outstanding Natural Beauty.

There is also a wealth of picturesque villages, country houses and parkland hidden within its rolling landscape, waiting to be discovered.

Please come and enjoy the unique splendours of our countryside, but please also support the local businesses that help make the countryside the vibrant place that it is today.

The Countryside Code

- Be Safe - plan ahead and follow any signs
- Leave gates and property as you find them
- Protect plants and animals, and take your litter home
- Keep dogs under close control
- Consider other people

Tourist Information Centre

Battle Abbey, High Street, Battle

Tel: 01424 773721

Fax: 01424 773436

email: battletic@rother.gov.uk

The information contained in this leaflet was correct at the time of printing (March 2006)

Refreshments and Local Services

(see map for location)

- 1 Catsfield Village Stores**
Village Convenience Store -
01424 893498
- 2 The White Hart**
Public House & Restaurant -
01424 892650
- 3 Farthings Farm**
Bed & Breakfast Accommodation -
01424 773107
- 4 Powdermills Hotel**
Hotel, Conference and Wedding Venue
- 01424 775511
- 5 Great Park Farm & Nursery**
Farm Shop and Nursery -
01424 772531
- 6 Owls Beam & Oxshoe Cottages**
Self Catering Accommodation -
01424 773132
- 7 Longacre**
Bed & Breakfast Accommodation -
01424 892650

Please note that inclusion of business details in this leaflet does not constitute an endorsement of the business by East Sussex County Council or its agents.

We hope that you enjoy the walk in this leaflet, which is one of a series produced by East Sussex County Council.

Copies of the leaflets for other walks in the series are available from Tourist Information Centres and libraries or direct from East Sussex County Council, by contacting the Rights of Way Team:-

By phone on:-
01273 482250 / 482354 / 482324

By post at:-
Transport and Environment Department
County Hall
St. Anne's Crescent
Lewes BN7 1UE

By e-mail at:-
rightsofway@eastsussex.gov.uk

By downloading from the website at:-
www.eastsussex.gov.uk

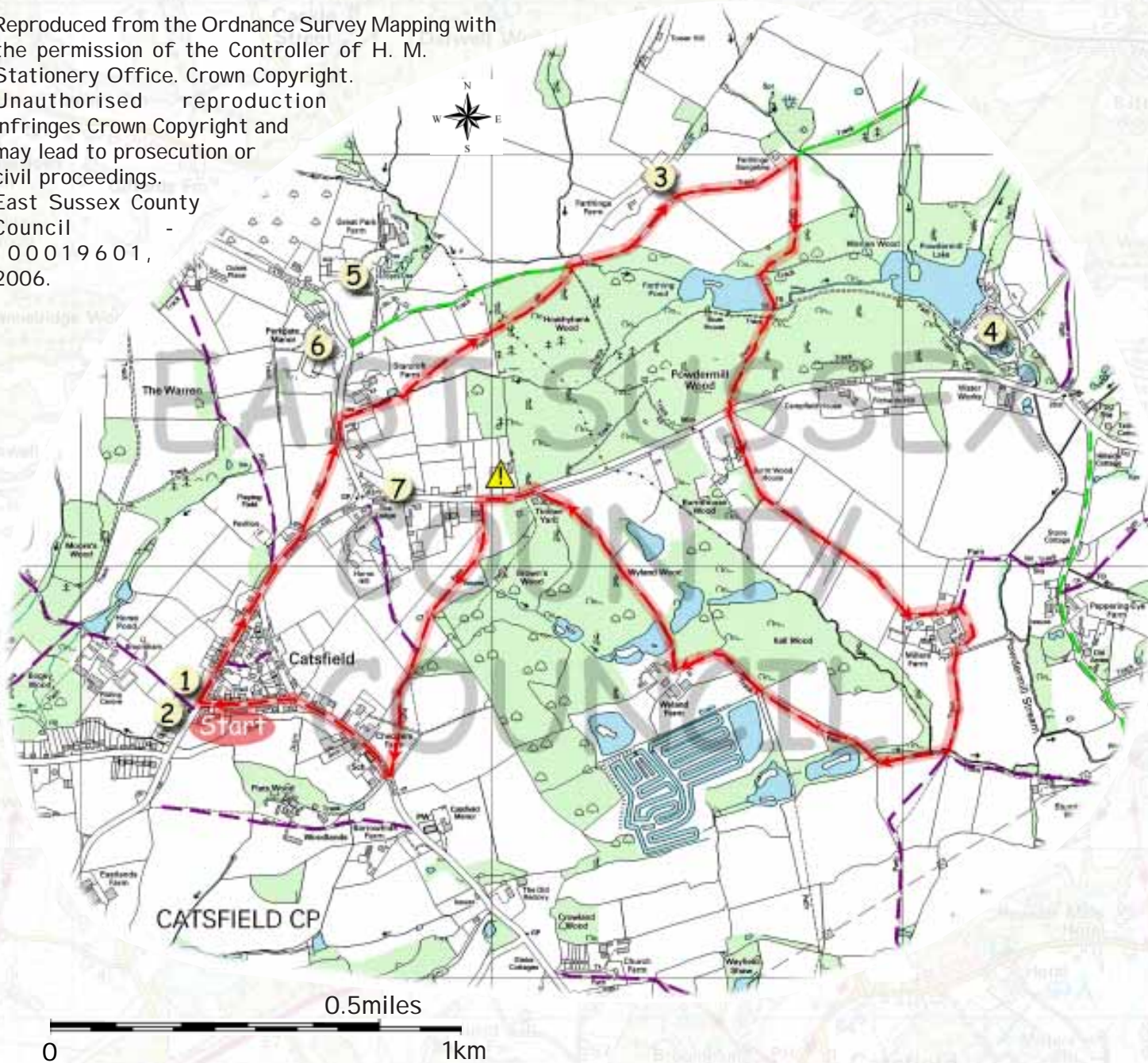
If any problems are encountered on the walk please report them to the above contact points.

This route is based on one published by Countryside Books in the book *Pub Strolls in East Sussex*. If you enjoyed the walk and would like to explore further similar ones, the guide book can be purchased through local booksellers:-

ISBN 1-85306-670-2

Catsfield Walk

Reproduced from the Ordnance Survey Mapping with the permission of the Controller of H. M. Stationery Office. Crown Copyright. Unauthorised reproduction infringes Crown Copyright and may lead to prosecution or civil proceedings.
East Sussex County Council
100019601,
2006.



The White Hart Public House

Map Legend

-  Refreshments & Local Services (see over for details)
-  Beware of Traffic
-  Route
-  Other Public Footpaths
-  Other Public Bridleways



Lake View

Starting from the White Hart, turn left to follow the main road through the village. After a distance of approximately 500 metres (550 yds.), turn left to join the footpath beyond Park Gate Bungalows. The route here is signposted along the 1066 Country Walk, which the first section of this walk follows, heading towards Battle.

Cross the field diagonally as waymarked to reach Catsfield Road. Turn left and after a short distance turn right onto the signposted footpath following the entrance to Starcroft Farm. Continue to follow the 1066 Country Walk, along a field edge, and then across a field keeping to the left of a conifer plantation, and along the route through Hoathybank Wood. On reaching the junction with a bridleway, turn right and follow the track for a distance of approximately 645 metres (700 yds.), passing Farthings Farm, before turning right onto the signposted footpath, just after passing Farthings Cottage. Cross the field in the direction indicated, before crossing a stile into Powdermill Wood.

Follow the route through the wood, heading down hill to Farthing Pond. After crossing the bridge over the outflow stream from the pond, continue along the main track through Powdermill Wood, ignoring side paths, to reach Powdermill Lane. Cross the road, and follow the route ahead along the driveway to Millers Farm. After a distance of approximately 750 metres (820 yds.), go through the gates by the farm, as waymarked, and follow the path round to the right, behind the farm buildings. Cross two stiles in quick succession, turning left, to go through a gate, and then join a farm track beyond. Follow the track to the bottom of the hill.

Turn right at the bottom of the hill through the gate, and follow the field edge path, keeping the boundary to your right. From the field corner, cross a stile and footbridge, and continue to follow the route through the wood. Follow the waymarked route across the next field, to join the track leading to Wyland Farm. Bear right and follow the track, turning right at the farm, and continuing to follow the track between two fishing lakes. From Wyland Farm, follow the driveway for a distance of 400 metres (440 yds.) to a point where the driveway forks right along a new entrance. At this point, keep left, to follow the line of the original driveway to its junction with Powdermill Lane.

Turn left and follow the road for a short distance, taking care of this busy section of road. After approximately 130 metres (140 yds.) turn left to cross the stile and join the signposted footpath. Cross the field in the direction indicated, heading towards a gap between the trees. Continue towards the corner of the field, and an iron ladder stile. Beyond this stile, follow the route diagonally across the next field to reach a gate leading on to Church Road.

Turn left and follow the road back towards Catsfield village centre, bearing left at the road junction. Continue to follow the road to its junction with the main road opposite the White Hart, and the end of the walk.



Woodland Path